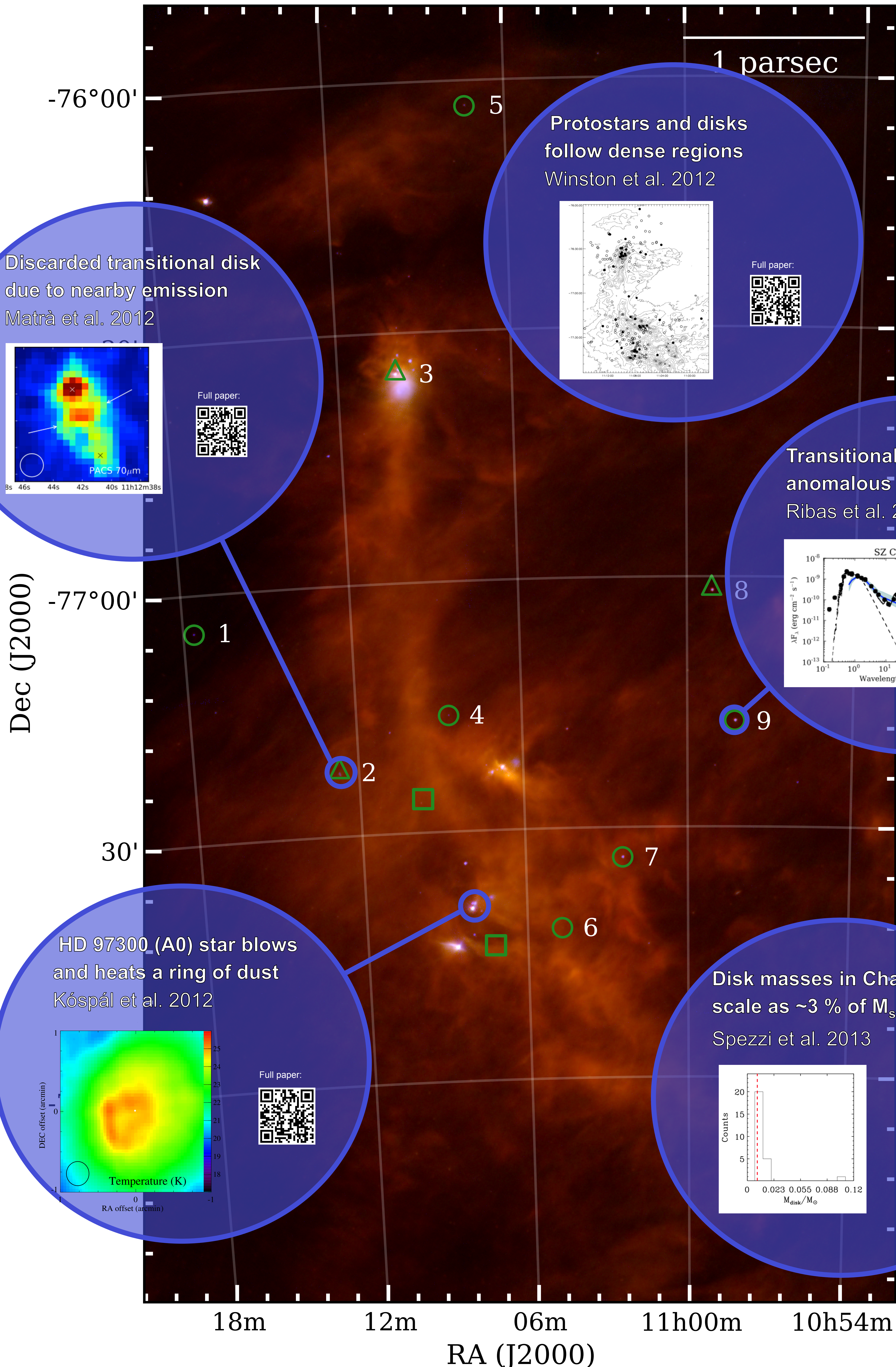


Chamaeleon by Herschel

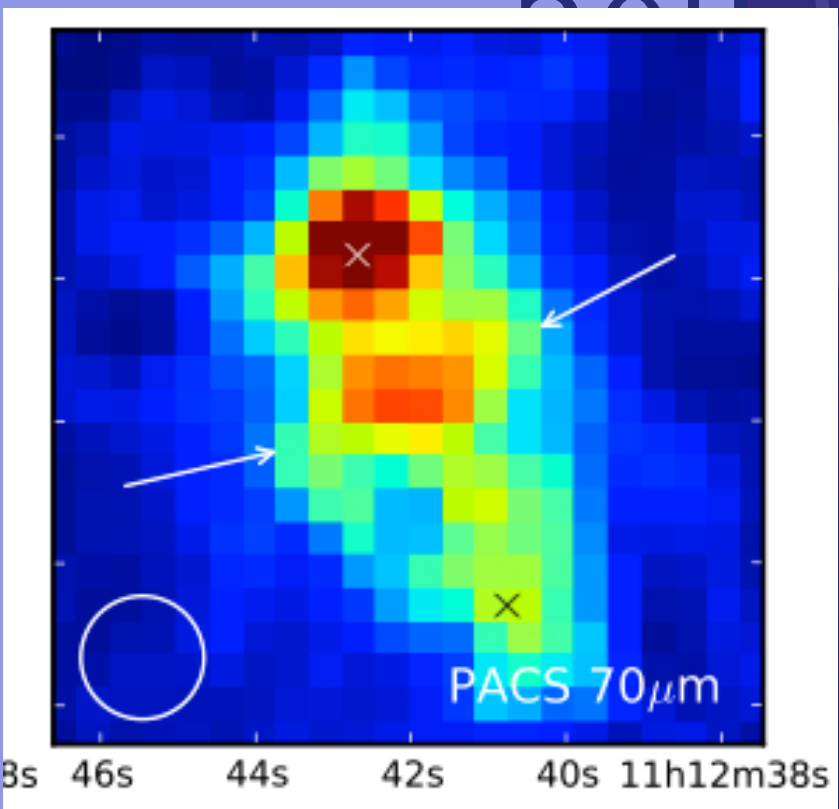


Bruno Merín¹, Elaine Winston², Loredana Spezzi², Luca Matrà^{1,3}, Álvaro Ribas^{1,4}, Ágnes Kóspál³, Catarina Alves de Oliveira¹, Hervé Bouy⁴, Roland Vavrek¹, Elena Puga¹, Nick Cox⁵, Timo Prusti², Göran L. Pilbratt², Philippe André⁵

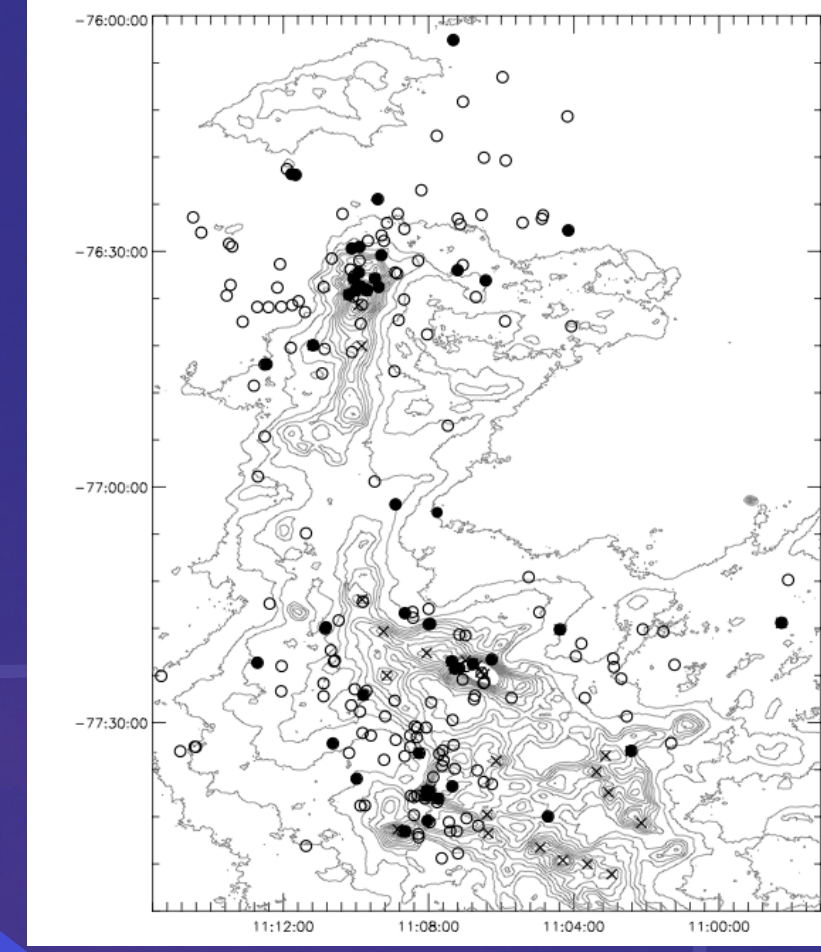
¹ ESA – ESAC, Spain ² ESA – ESTEC, Netherlands ³ U. Cambridge, UK, ⁴ CAB, Spain ⁵ K.U. Leuven, Belgium ⁶ CEA-Saclay, France



Discarded transitional disk due to nearby emission
Matrà et al. 2012



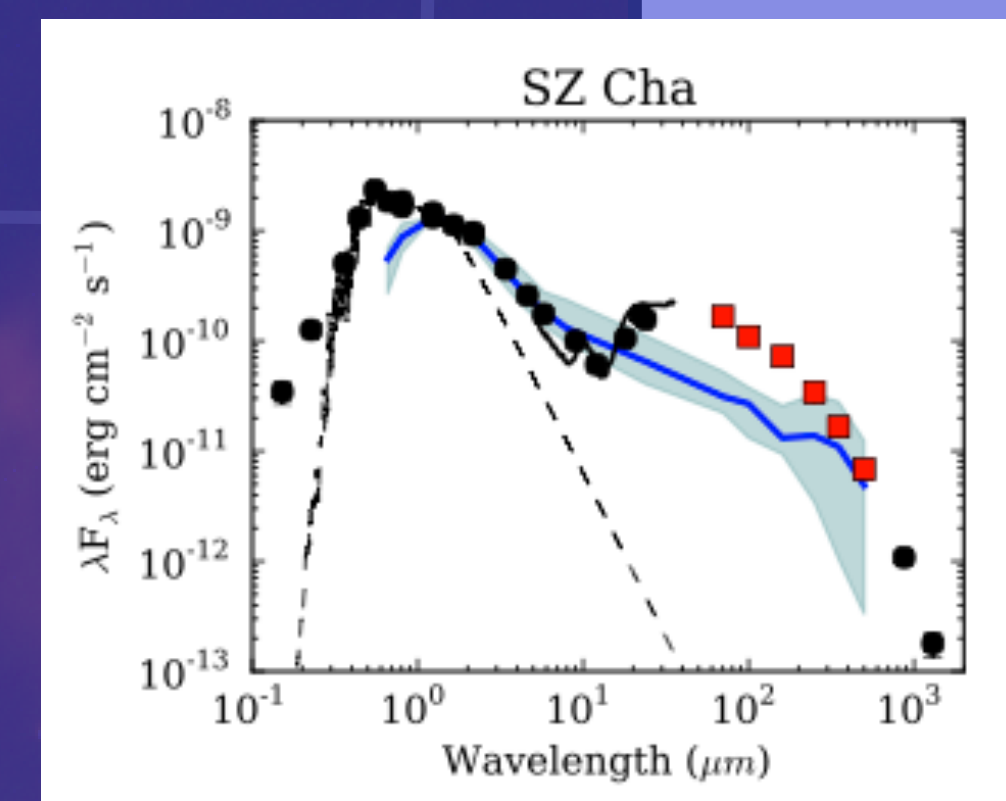
Protostars and disks follow dense regions
Winston et al. 2012



Full paper:



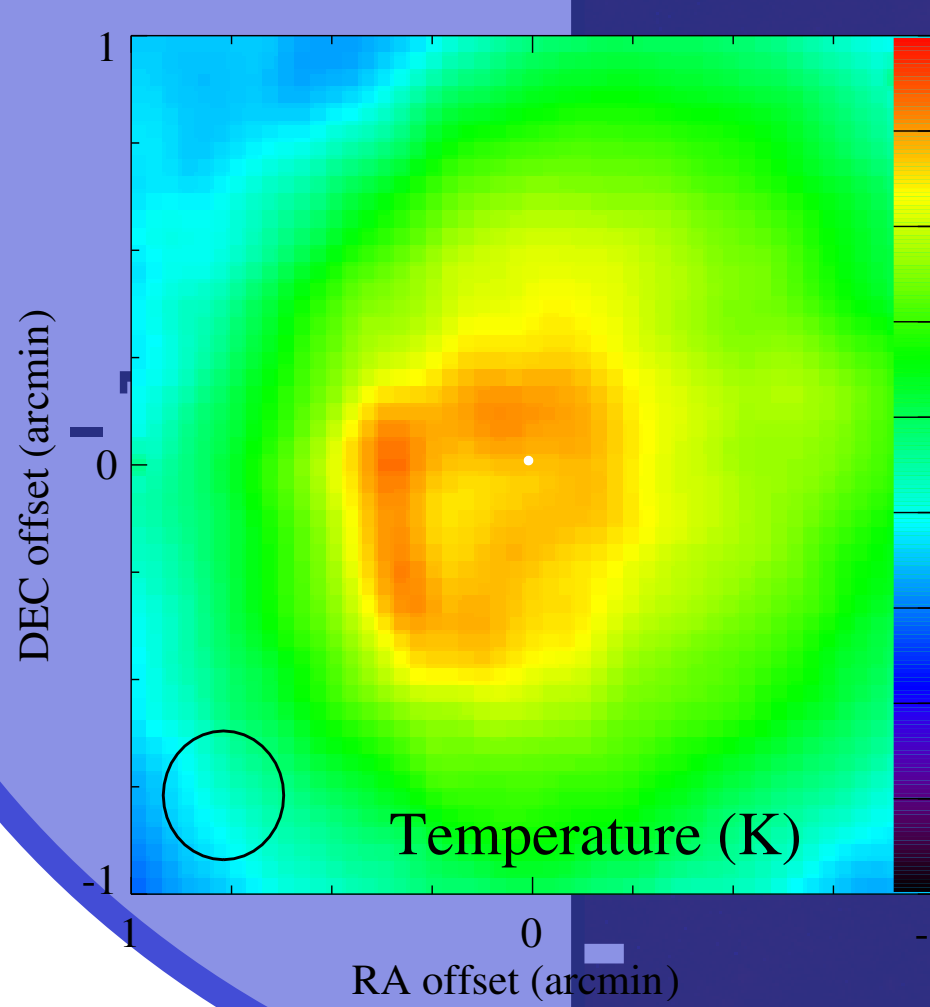
Transitional disks have anomalous outer disks
Ribas et al. 2013



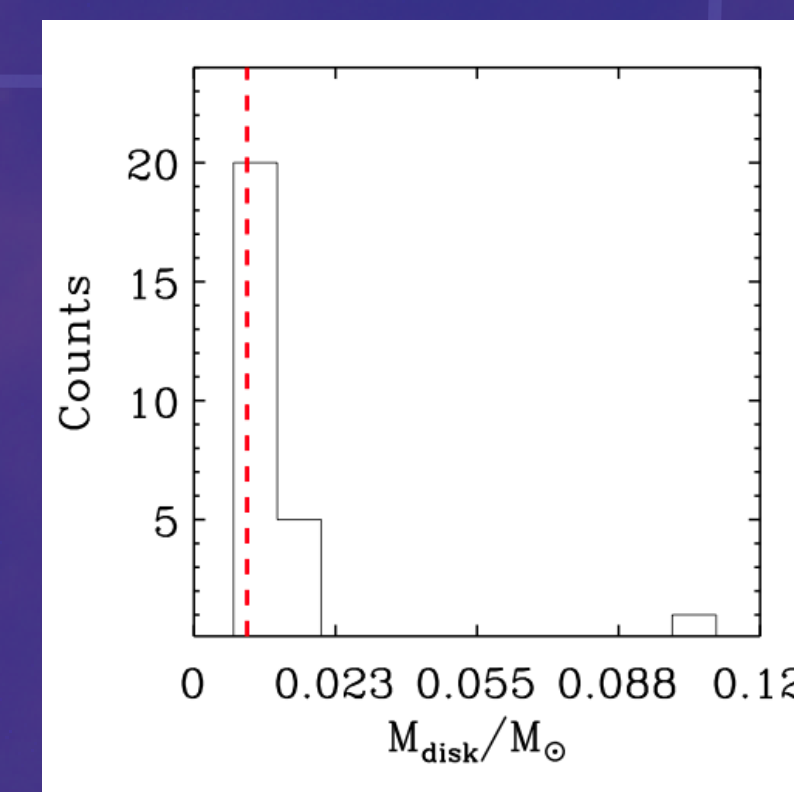
Full paper:



HD 97300 (A0) star blows and heats a ring of dust
Kóspál et al. 2012



Disk masses in Cham II scale as ~3 % of M_star
Spezzi et al. 2013



Full paper:



Acknowledgements

This work was partially made possible thanks to the ESA Trainee and Research Fellowship programs at ESAC (Spain).